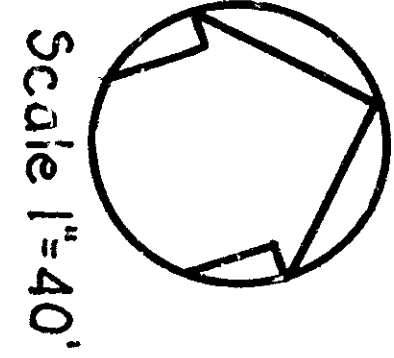
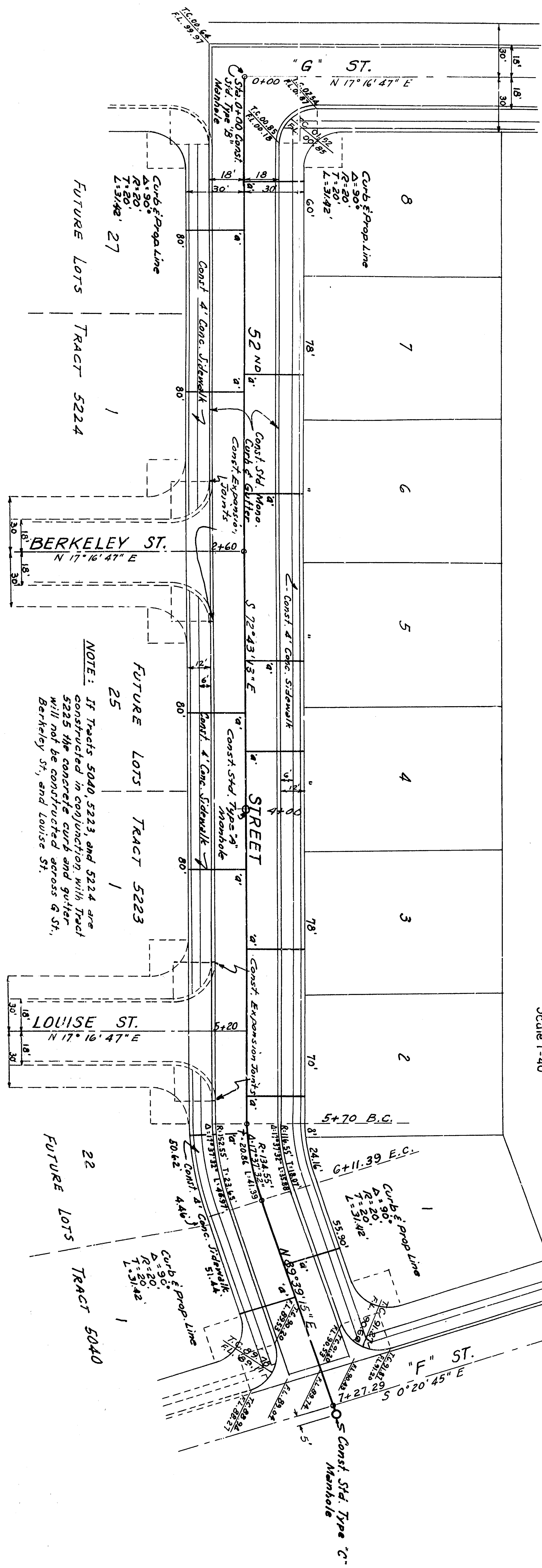
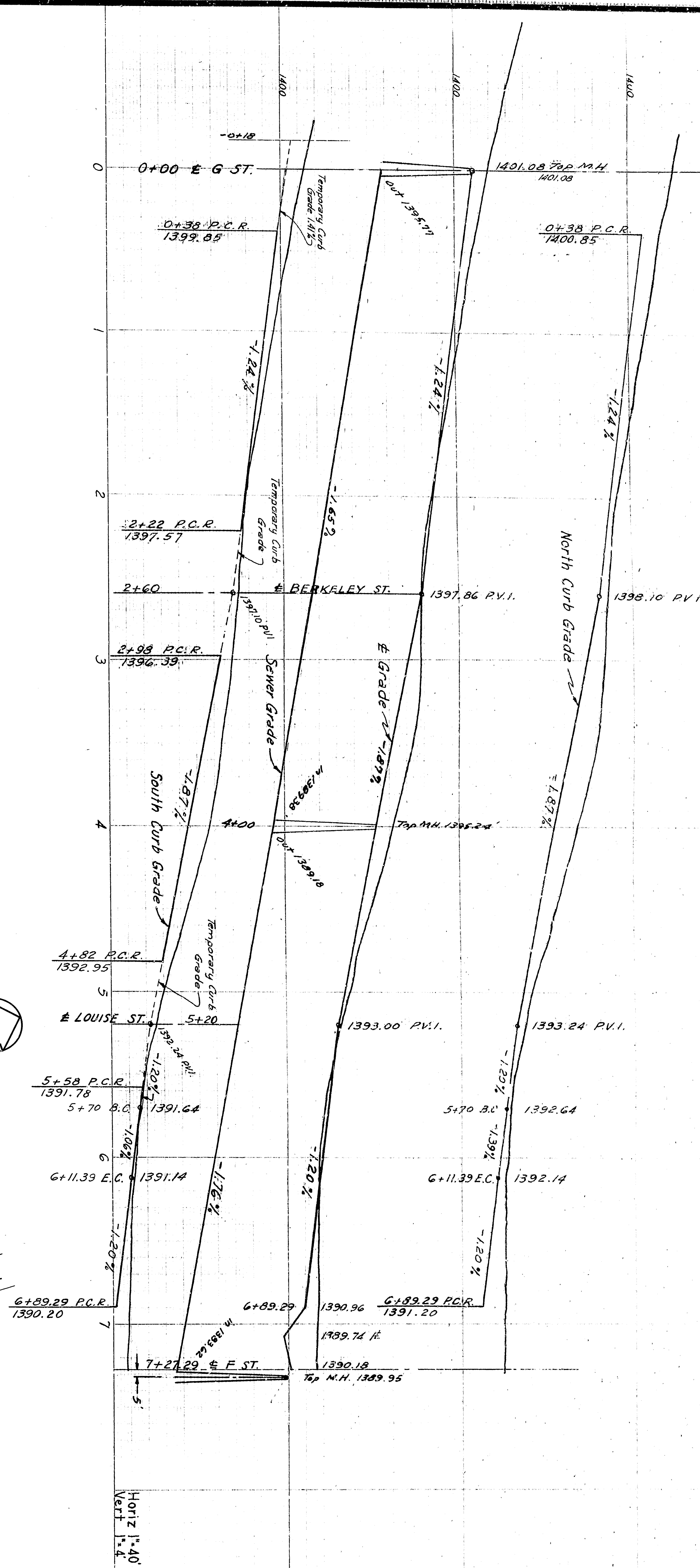


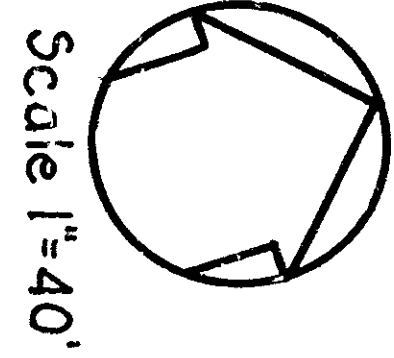
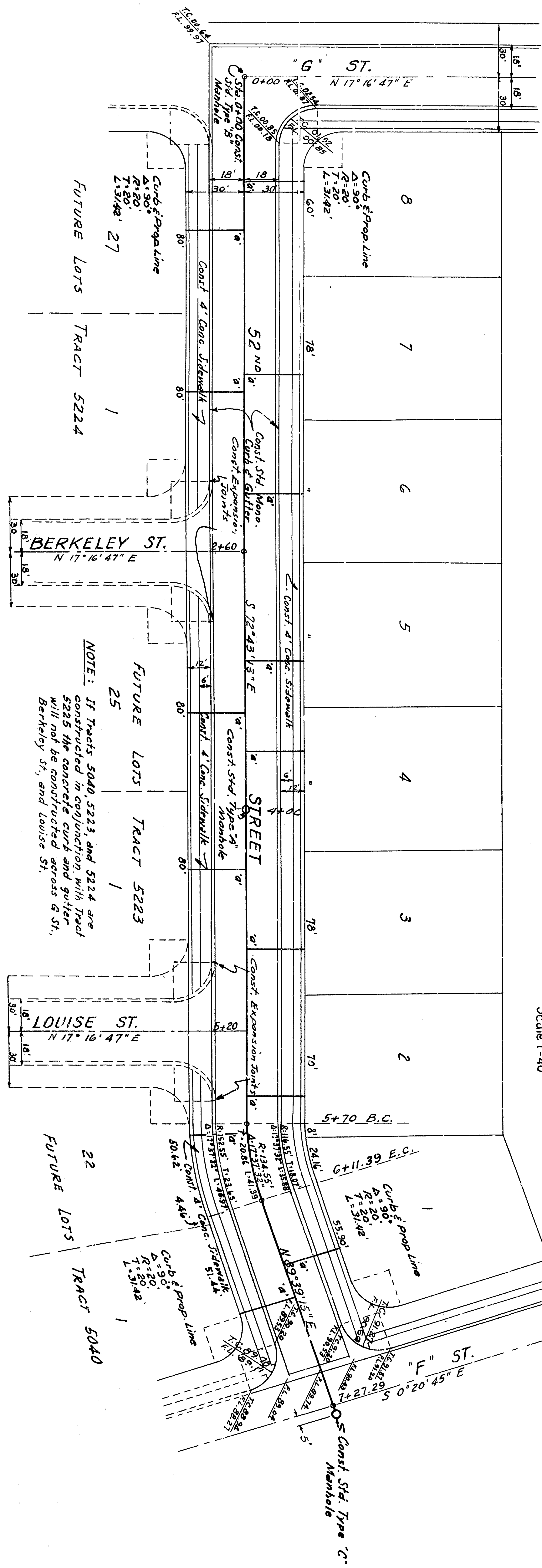
CROSS SECTION (2'-1/4" X 1")
 CROSS SECTION DRAWING 2321-D TYPE 36-A
 SIDEWALK LOCATION DRAWING 2321-B CASE C
 NOTE: SIDEWALKS ON SOUTH SIDE OF ST. STREET
 TO BE CONSTRUCTED WITH TRACTS 5040, 5223, 5224



Scale 1"=40'



CROSS SECTION (2'-1/2" X 4")
 CROSS SECTION DRAWING 2321-D TYPE 36-A
 SIDEWALK LOCATION DRAWING 2321-B CASE C
 NOTE: SIDEWALKS ON SOUTH SIDE OF 52' OF STREET
 TO BE CONSTRUCTED WITH TRACTS 5040, 5223, 5224



Scale 1"=40'

